

Original Paper

# Medical Food Assessment Using a Smartphone App With Continuous Glucose Monitoring Sensors: Proof-of-Concept Study

Hector Roux de Bézieux<sup>1,2,3</sup>, MA, MSc; James Bullard<sup>1</sup>, PhD; Orville Kolterman<sup>1</sup>, MD; Michael Souza<sup>1</sup>, BSc; Fanny Perraudau<sup>1</sup>, PhD

<sup>1</sup>Pendulum Therapeutics, Inc, San Francisco, CA, United States

<sup>2</sup>Division of Biostatistics, School of Public Health, University of California, Berkeley, Berkeley, CA, United States

<sup>3</sup>Center for Computational Biology, University of California, Berkeley, CA, United States

**Corresponding Author:**

Fanny Perraudau, PhD  
Pendulum Therapeutics, Inc  
933 20th Street  
San Francisco, CA, 94107  
United States  
Phone: 1 650 276 6517  
Email: [fanny.perraudau@pendulum.co](mailto:fanny.perraudau@pendulum.co)

## Abstract

**Background:** Novel wearable biosensors, ubiquitous smartphone ownership, and telemedicine are converging to enable new paradigms of clinical research. A new generation of continuous glucose monitoring (CGM) devices provides access to clinical-grade measurement of interstitial glucose levels. Adoption of these sensors has become widespread for the management of type 1 diabetes and is accelerating in type 2 diabetes. In parallel, individuals are adopting health-related smartphone-based apps to monitor and manage care.

**Objective:** We conducted a proof-of-concept study to investigate the potential of collecting robust, annotated, real-time clinical study measures of glucose levels without clinic visits.

**Methods:** Self-administered meal-tolerance tests were conducted to assess the impact of a proprietary synbiotic medical food on glucose control in a 6-week, double-blind, placebo-controlled, 2×2 cross-over pilot study (n=6). The primary endpoint was incremental glucose measured using Abbott Freestyle Libre CGM devices associated with a smartphone app that provided a visual diet log.

**Results:** All subjects completed the study and mastered CGM device usage. Over 40 days, 3000 data points on average per subject were collected across three sensors. No adverse events were recorded, and subjects reported general satisfaction with sensor management, the study product, and the smartphone app, with an average self-reported satisfaction score of 8.25/10. Despite a lack of sufficient power to achieve statistical significance, we demonstrated that we can detect meaningful changes in the postprandial glucose response in real-world settings, pointing to the merits of larger studies in the future.

**Conclusions:** We have shown that CGM devices can provide a comprehensive picture of glucose control without clinic visits. CGM device usage in conjunction with our custom smartphone app can lower the participation burden for subjects while reducing study costs, and allows for robust integration of multiple valuable data types with glucose levels remotely.

**Trial Registration:** ClinicalTrials.gov NCT04424888; <http://clinicaltrials.gov/ct2/show/NCT04424888>.

(*JMIR Form Res* 2021;5(3):e20175) doi: [10.2196/20175](https://doi.org/10.2196/20175)

## KEYWORDS

clinical trials; continuous glucose monitoring; lifestyle modification; mobile app; telemedicine; diabetes

## Introduction

Diabetes is one of the most prevalent chronic diseases in the world, impacting over 422 million people worldwide [1]. In the

United States alone, type 2 diabetes (T2D) affected over 32 million individuals as of 2018 [2]. Western lifestyle, including diet, has been shown to play a clear role in the development of the disease [3-5]. Although a large and growing number of drugs

have been approved for the treatment of T2D, no cure or universally effective pharmacological intervention yet exists.

By contrast, studies where sustained dietary and behavioral changes were made (eg, caloric restriction) have shown profound improvements in glucose control in subjects who are able to adhere to the regimen [6]. For example, in a study conducted by Lean et al, 306 individuals with T2D were given an 850-calorie diet. While only 24% achieved the primary end goal of weight loss of  $\geq 15$  kg, 86% of subjects who achieved the goal saw remission of their diabetes by 12 months [7]. Such low compliance, which is routinely observed in trials with dietary and behavioral changes, limits the interpretability of the intervention. In addition, rigorously accounting for such attrition in a randomized controlled trial (RCT) can dramatically increase the cost and complexity of conducting such studies, especially over long periods of time. As a consequence, rigorous trials of feasible dietary changes in routine clinical practice settings are frequently not performed, which in turn limits the body of clinical evidence available to guide treatment [8,9]. Studies that are less invasive in terms of the participants' usual daily activities may enable collection of endpoint measurements matching the quality of traditional clinical study assessments while decreasing dropouts and improving the tracking of compliance.

The growing use of mobile technologies, wearable biosensors, and telemedicine in RCTs allows for closer patient monitoring and increased engagement while limiting overhead [10]. If a sensor can provide high-quality measurements of relevant clinical metrics, it may be leveraged to conduct robust trials outside the traditional clinical trial setting. In the context of diabetes, continuous glucose monitoring (CGM) devices represent a widely used type of sensor. A new generation of devices [11] has overcome earlier drawbacks of previous CGM devices, including cost and the continuing need for calibration [12], and has gained regulatory approval [13-15]. Consequently, the number of clinical trials using CGM devices to measure primary or secondary endpoints has increased [16-22], permitting new innovative approaches and clinical trial designs. For example, in a previous report [23], 36 subjects were enrolled remotely and received CGM devices via shipments. Instructions on CGM application and usage were given remotely, and 34 subjects used the devices correctly more than 95% of the time. Such recent results may enable and support the conduction of robust investigations outside the usual clinical trial setting.

Although CGM deployment in clinical research is now well established, the advent of this new generation of glucose monitors has led to a large increase in studies relying mostly or solely on CGM data as primary outcome measures. Despite this, most studies do not fully leverage the potential of CGM devices, as they are deployed only for specific time periods in the study, for example, the first and last days of the trial [17-21], and when conducting interventions and monitoring while attending a clinical center [24,25]. Furthermore, integrating and augmenting the data provided by CGM devices with other data types, such as food logs and activity data, are still relatively unexplored.

In this manuscript, we present the results from a 6-week, double-blind, randomized, placebo-controlled, exploratory 2x2

cross-over study (n=6). A custom smartphone app was used to record food intake, exercise, and alcohol consumption and integrate these data with CGM data to construct a visual diet log in sync with concurrent glucose levels. In a concomitant study [26], we observed changes in postprandial glucose response in patients with T2D who consumed a five-strain synbiotic medical food manufactured by the study sponsor. The postprandial glucose response was measured following a standardized meal-tolerance test (MTT) administered at the clinic. In parallel, we were also interested in following subjects using the medical food while they pursue their daily activities unencumbered by the disruptions introduced by required visits to a research clinic. Thus, in this exploratory study, subjects consumed the medical food, and the postprandial glucose response was measured using CGM devices via a self-administered MTT at home. The aim of this study was to demonstrate the feasibility of measuring clinically relevant data for research purposes using CGM devices and a smartphone app while subjects pursue their normal daily activities.

## Methods

### Study Design

A double-blind, randomized, placebo-controlled cross-over design was used to compare responses to the following two experimental interventions: a synbiotic medical food product, which was provided by the study sponsor, in the form of three capsules taken twice a day, and an inactive placebo present in similar capsules ([Multimedia Appendix 1](#)). Subjects wore CGM (Freestyle Libre) devices through the entirety of the study according to the manufacturer's instructions for use. At baseline, beginning/end of each period, and washout, subjects were asked to collect a stool sample. The concentrations of the bacterial strains, which were ingested in the medical food, in those stool samples were estimated using quantitative polymerase chain reaction (qPCR). Strain concentrations were averaged across three replicates. One subject (Subject 4) did not provide stool samples, so this part of the analysis was performed in five subjects. Anthropometric characteristics were also measured.

Throughout the study, subjects used a custom smartphone app for the Android platform. This app was developed to facilitate the real-time collection and integration of glucose levels, a visual food log, an alcohol log, and an exercise log, as well as record scanning compliance (how often do subjects scan their CGM devices) and study events (such as MTT). Through the app, subjects could take pictures and annotate them to describe their food consumption. They could also submit text annotations without pictures to log events such as exercise. Screenshots of the mobile app can be found in [Multimedia Appendix 2](#) and [Multimedia Appendix 3](#).

The goal of this exploratory study was to determine how to collect and analyze appropriate glucose metrics when conducting a medical food study with CGM devices and a novel smartphone app. This includes measuring operating characteristics (sensitivity and specificity) and sources of variance for those metrics when determined with Freestyle Libre glucose sensors, as well as identifying proper statistical tests of glucose metrics, for example, to test for changes in areas under the curve (AUCs)

for glucose derived from self-administered MTTs between active and placebo groups. Additional endpoints of interest were change in body mass, change in fecal probiotic strain concentration, expected lifespan of CGM sensors, CGM sensor scanning, photo logging of compliance rates, and usability feedback.

Subjects were randomly assigned to the two study arms (study product then placebo or vice versa). Subjects were assigned in pairs so that each arm contained the same number of subjects. Study staff and subjects were blinded to the identity of the study product. Randomization was performed by a statistician not directly involved in study conduct. Both periods lasted 13 to 17 days and were separated by a washout period of 3 to 6 days. Details of the durations of the study periods for each subject can be found in [Multimedia Appendix 4](#).

This study was approved on March 13, 2018, by the Aspire Institutional Review Board (IRB) (protocol number WB01-205). Informed consent was obtained from each subject prior to participation. Since it was a prospective study, it was retrospectively registered on ClinicalTrials.gov (registration number NCT04424888).

### Subject Enrollment and Characteristics

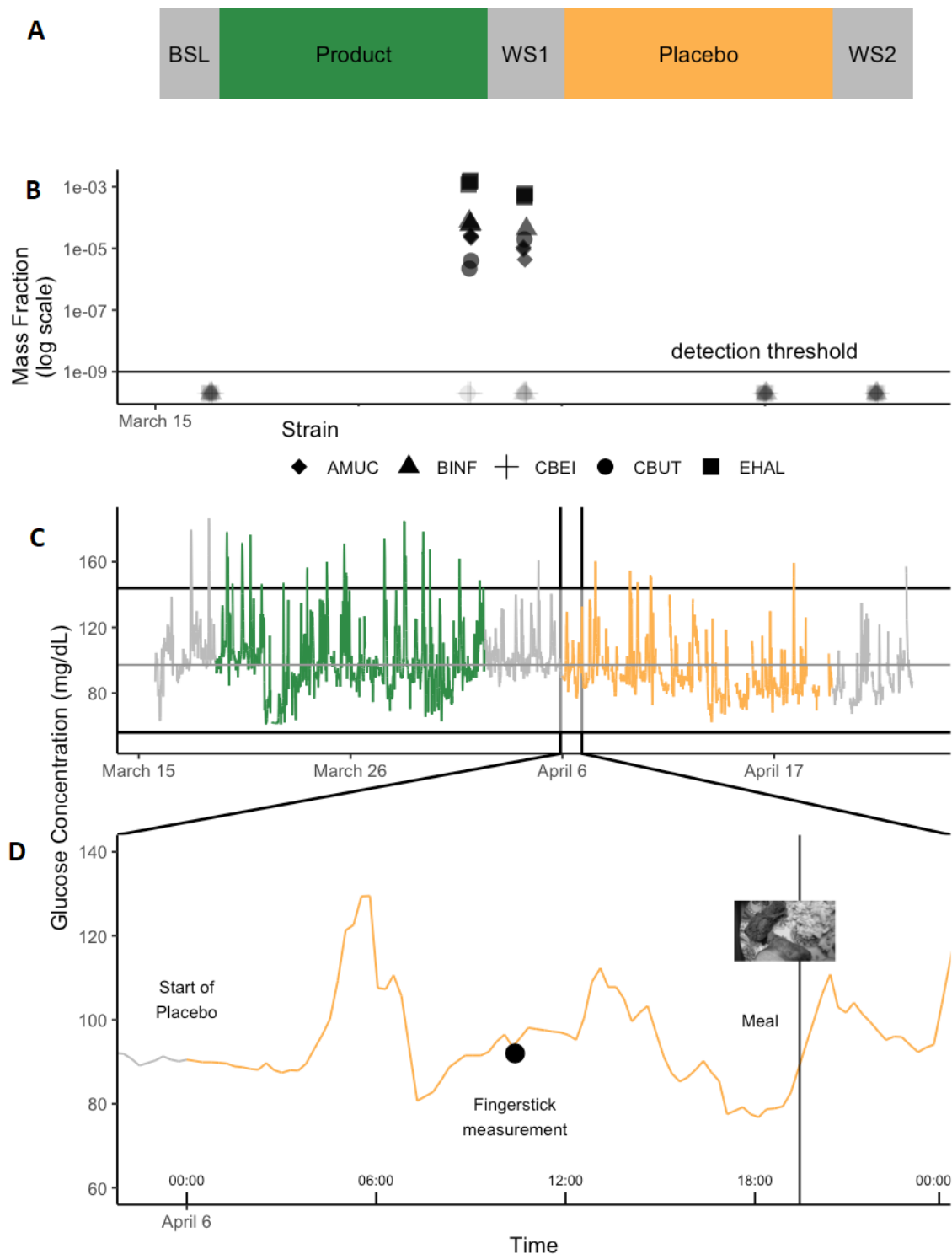
Since this was an exploratory study, the main inclusion criterion was a minimum age of 17 years. Key exclusion criteria were pregnancy; continuous parenteral nutrition; and current use or planned use of antibiotic, antifungal, antiparasitic, or antiviral treatment during the study. Subjects were recruited by word of mouth from members of the biotechnology research community in San Francisco, California. A total of six subjects were enrolled in the study. Subjects were remunerated in the form of an Amazon gift card of US \$100 for successful completion of each of the two study periods. Subjects had a run-in of 3 to 5

days before the first period (product/placebo) to familiarize themselves with the CGM devices and demonstrate that they could employ the devices as instructed. Subjects were shown how to use their CGM devices and how to log their meals and exercise and take pictures of their food intake through the smartphone app. Throughout the baseline period, they could ask questions about CGM usage. All subjects mastered correct use of the CGM devices and the smartphone app under observation by the study coordinator at the clinic. This consisted of properly collecting 24 hours of data and demonstrating the ability to take pictures and make annotations through the app.

### Data Collection

The Freestyle Libre CGM devices used in this study provide estimates of interstitial fluid glucose levels. At 15-minute intervals, the estimates are recorded in the device and stored for up to 8 hours. Whenever the CGM receiver is wanded over the device, the 8 hours of data in the device at that time are downloaded for storage in an external database. These data can be used to display a subject's glucose levels at various time intervals. For a subject who started with the study product followed by washout (WS1), crossed over to placebo, and ended with a second washout (WS2) ([Figure 1A](#)), for example, we can visualize the glucose level throughout the study ([Figure 1C](#)) or zoom in on a specific day ([Figure 1D](#)). Glucose levels as estimated by the CGM device can be complemented by other data sources. A visual food log was constructed as subjects logged pictures of their meals through the smartphone app. As evidenced in [Figure 1D](#), the recorded meal was associated with a spike in glucose levels. To facilitate interpretation of CGM data, we developed a peak detection algorithm based on methodology from Palshikar [27] that can automatically detect glucose peaks ([Multimedia Appendix 1](#)).

**Figure 1.** Glucose and dietary data collected for one subject. All data types collected for one subject. (A) Subject 1 starts in the active product arm (14 days) and then moves to the placebo arm (14 days). (B) At baseline, the end of each period, and study end, the subject provides stool samples. Strains present in the product are detected at the end of the active product period and a little after (arrow mark). (C) Continuous glucose monitoring (CGM) glucose levels are also tracked throughout the 6 weeks. (D) The values can be compared to the fingerstick measurements or used in coordination with pictures taken (here chicken wings at 7 PM) to detect meal-related glucose excursions. AMUC: *Akkermansia muciniphila*; BINF: *Bifidobacterium infantis*; BSL: baseline; CBEI: *Clostridium beijerinckii*; CBUT: *Clostridium butyricum*; EHAL: *Anaerobutyricum hallii*; WS: washout.



To ensure that their CGM devices were appropriately inserted, subjects also used conventional fingerstick devices (FreeStyle or CVS Health Blood Glucose Meter) to measure capillary glucose levels several times during the study and reported the values through the app. Fingerstick and CGM measurements

were in good agreement ([Multimedia Appendix 5](#)) and were within the expected range [13].

At the end of the study, after unblinding, the clinical coordinator conducted an interview with all subjects, excluding Subject 5.

This interview was guided by a predefined template ([Multimedia Appendix 6](#)). Questions focused on the following categories: study design, product, CGM device, mobile app, behavior changes, future studies, and closing remarks, and there was a mix of open-ended and closed-ended questions. Subjects were also asked if they would participate in another similar study and if they would recommend others to a study like this, on a scale ranging from 1 (no) to 10 (absolutely).

Finally, to assess the presence of our strains, stool samples were collected throughout the study, and strain concentrations were measured by qPCR of frozen fecal samples. qPCR analysis was conducted in five of the six subjects who provided stool samples. In [Figure 1B](#), strain concentration information is overlaid with arm assignment. As expected, we only detected the presence of the strains after study product administration.

### Measuring the Response to a Fasted MTT

The fasted MTT is a gold standard test to measure glucose control in subjects. A standardized meal was to be consumed in the morning after fasting for at least 6 hours, and subjects were asked to ingest no additional calories for one additional hour. All subjects ingested the same standardized meal as follows: a Boost nutritional drink containing 45 g of carbohydrates including 22 g of sugars [28]. The MTT was performed four times throughout the study by each subject (at the start and end of both the placebo and product periods).

Subjects recorded when they ingested the Boost drink through the smartphone app, and corresponding glucose levels were obtained from the CGM devices. The incremental AUC for glucose levels was calculated for each time point and subject [29]. The baseline for the incremental AUC was defined as the glucose level at  $t=0$ , when the Boost ingestion began, as recorded by the CGM device.

The AUCs at the beginning and end of the placebo/product periods were compared using  $\Delta$ AUC as follows:

$$\Delta\text{AUC} = \text{AUC}_{\text{End}} - \text{AUC}_{\text{Beginning}} \quad (1)$$

Finally, the cross-over design allowed the comparison of  $\Delta$ AUC between the placebo and active products ( $\Delta\Delta$ AUC). We performed a one-sided Wilcoxon signed-rank test to test the null hypothesis ( $H_0: \Delta\Delta\text{AUC} \geq 0$  versus  $H_1: \Delta\Delta\text{AUC} < 0$ ).

## Results

### Subjects and Sensors

All six enrolled subjects completed the study. No adverse events or major deviations from the protocol were reported. All hypoglycemic events (defined as excursion below 70 mg/dL for at least two consecutive data points, ie, 30 minutes) are summarized in [Multimedia Appendix 7](#), according to the recommendations of Schnell et al [30]. In accordance with manufacturer recommendations, CGM sensors were worn for an average of 13 consecutive days. The first sensor was placed under the supervision of the study coordinator. Subjects then placed their second and third sensors by themselves. Four subjects (1, 3, 5, and 6) had to replace one sensor each after only 10 days, mostly because the sensor was dislodged while dressing. [Multimedia Appendix 8](#) recapitulates a few glucose-based subject-level metrics, according to the report by Schnell et al [30].

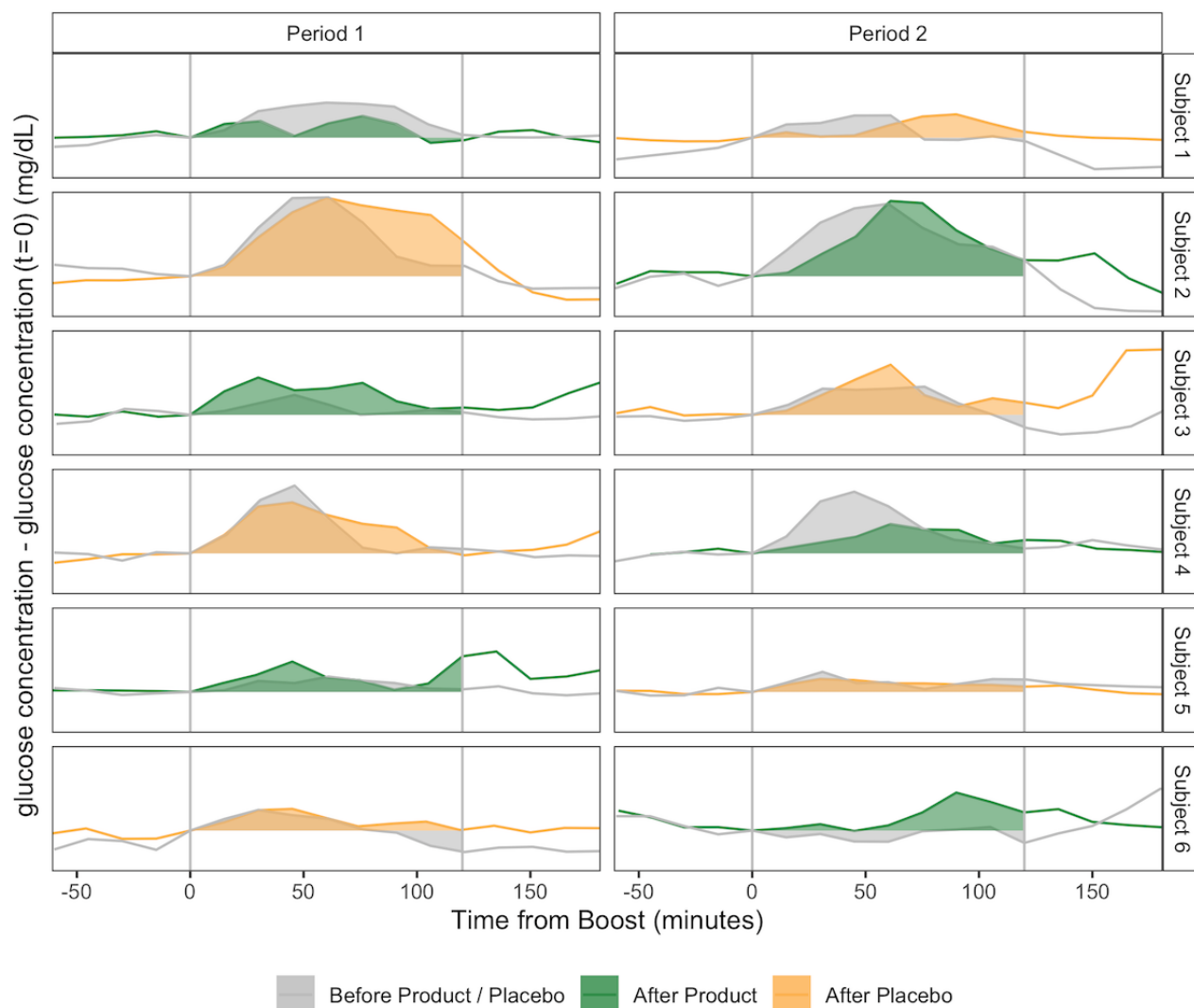
During interviews, subjects reported that CGM usage was a positive experience ([Multimedia Appendix 9](#)). However, two subjects inadvertently dislodged sensors because of clothing snags. Two subjects also reported minor soreness shortly after CGM implantation.

### Fasted MTT Using CGM Devices

At four time points throughout the study, subjects performed MTTs as described above. MTTs were performed just before the start and at the end of the placebo/product periods. The standardized MTT data were used to compare a potential change in the glucose response for a fixed nutrient intake. If the study product had the effect of improving a subject's glucose metabolism, a decrease in the peak glucose level and/or AUC would be expected.

As shown in [Figure 2](#), most subjects displayed an increase in glucose levels after taking the standardized meal. Each individual performed four MTTs (one at the beginning of each period, one at the end of the placebo period, and one at the end of the product period). Since the CGM devices used in this study generated a glucose measurement every 15 minutes, the curves are quite smooth, which allowed a robust computation of the AUC. The MTT data were obtained without additional subject engagement other than ingesting the standardized meal at home.

**Figure 2.** Results of the meal tolerance test (MTT). Glucose response to standardized meals for all six subjects in the study. Area under the curve values for the beginning of placebo/product, end of placebo, and end of product periods are in gray, yellow, and green, respectively. The MTTs are annotated by the subjects at time  $t=0$  using the smartphone app. Glucose levels are normalized by the glucose level at  $t=0$ .



For Subjects 1, 2, and 4, the AUC decreased on ingesting the active study product, and  $\Delta AUC_{\text{Product}}$  was smaller than  $\Delta AUC_{\text{Placebo}}$ . For Subjects 3, 5, and 6, the AUC increased on ingesting the product, and  $\Delta AUC_{\text{Product}}$  was greater than  $\Delta AUC_{\text{Placebo}}$  (Table 1 and Multimedia Appendix 10). Owing to

the scale ( $n=6$ ) and design of this pilot study, there is very limited power. In addition, none of the subjects were diagnosed with T2D, so we do not expect to find statistically significant results. Accordingly, the one-sided Wilcoxon signed-rank test had a  $P$  value of .28.

**Table 1.** Subjects ranked by baseline value of area under the glucose curve.

Subject <sup>a</sup>	Baseline AUC <sup>b</sup> (mg/dL/min)	$\Delta AUC_{\text{Placebo}}$ (mg/dL/min)	$\Delta AUC_{\text{Product}}$ (mg/dL/min)	$\Delta \Delta AUC$ (mg/dL/min)
6	265.3	1035.1	1683.2	648.1
3	737.0	1027.1	1598.3	571.2
5	834.8	102.8	552.8	450.0
4	1557.6	427.7	-933.0	-1360.7
1	2084.2	-221.6	-1213.9	-992.3
2	3931.8	1309.1	-978.1	-2287.2

<sup>a</sup>For Subjects 1, 2, and 4, the AUC decreased when taking the product and  $\Delta AUC_{\text{Product}}$  was smaller than  $\Delta AUC_{\text{Placebo}}$ .

<sup>b</sup>AUC: area under the curve.

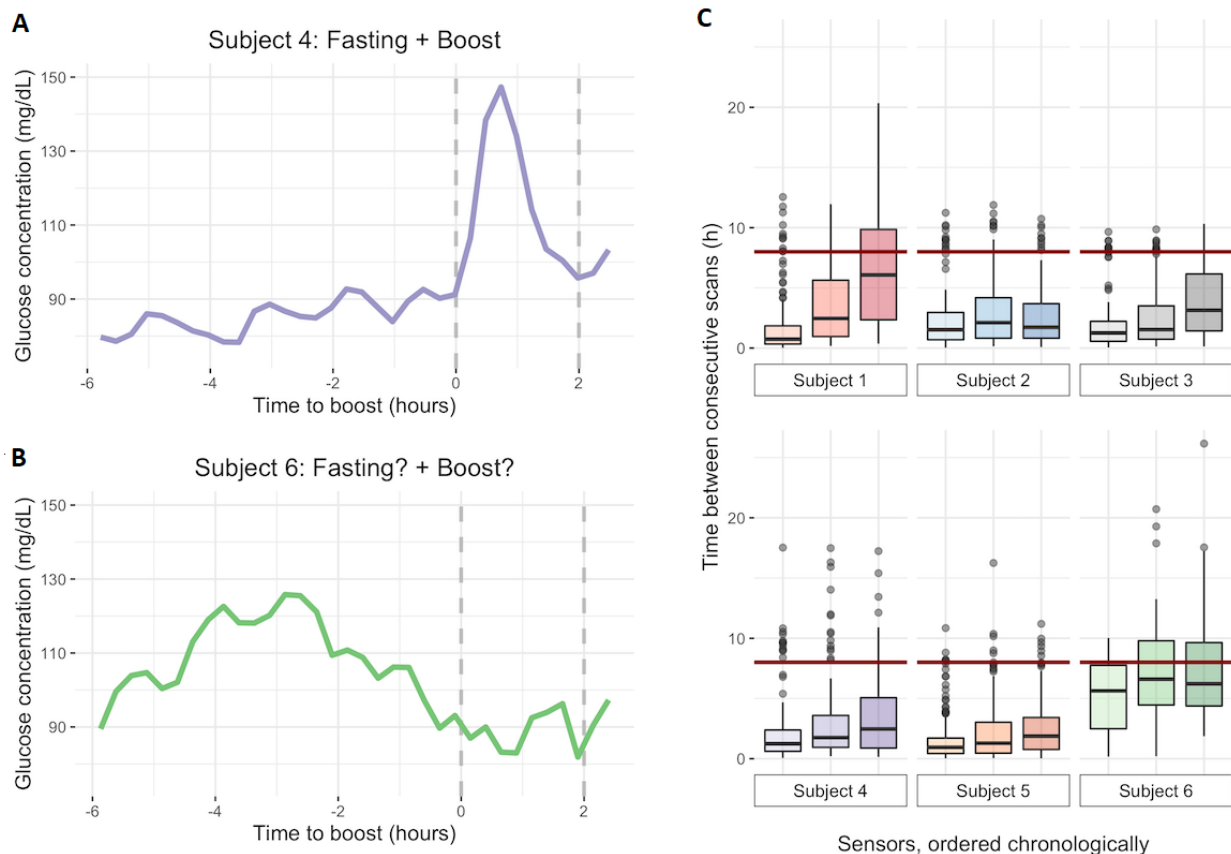
As this was a small pilot study, we did not use any baseline metric to stratify subjects based on their initial glucose control levels. However, a post-hoc analysis revealed that baseline AUC stratified the subjects into two clear and distinct groups (Table 1). Interestingly, those groups exactly matched the responder (AUC decrease)/nonresponder (AUC increase) status. Baseline AUC is an indication of the subject's glucose control level at the onset of the study. This is an interesting observation that should be explored in follow-up studies designed and powered appropriately. Using the mean  $\Delta\Delta\text{AUC}$  value of the three responders as a reasonable effect size and considering the variance of the  $\Delta\Delta\text{AUC}$  value from all subjects, a future study employing the same study design with 35 subjects is estimated to have a power above 90%.

### CGM Enables Novel Measures of Compliance

CGM devices can be utilized to perform MTTs in the subject's living environment instead of the artificial setting of a research clinic. In this study, subjects were asked to use a custom Android app to create a visual food diary and log workouts and the start times of four standardized meal consumption tests. As such, we know precisely when the MTT was conducted. Subjects were asked to fast for 6 hours before taking the MTT, and Subject 4 seemed to have adhered to this. Indeed, the glucose level curve of this subject was rather flat for the 6 hours preceding the test.

Then, right after ingesting the standardized meal, the glucose level spiked in a characteristic manner before returning to the baseline level after 2 hours (Figure 3A). On the other hand, Subject 6's response was quite different. For the test at the beginning of the product period, Subject 6's glucose level curve did not stay flat for the 6 hours before the glucose challenge (Figure 3B). Instead, it spiked from 90 mg/dL to 130 mg/dL and back over the course of 5 hours. Afterwards, glucose levels stayed flat during the MTT. Several explanations are possible. The MTT was performed at 7 AM, so the preceding peak might reflect a dawn effect [31], poor quality of sleep, alcohol consumption during the previous evening, or nighttime snacking. The subject's last recorded annotation before the Boost intake was at 8.44 PM the previous evening, so there is no indication of what could have caused this. Nonetheless, the fact that such an event was detectable before the MTT was performed is valuable information. Indeed, in such a case, it is easy to probe the subject for additional details to understand potentially confounding circumstances and ask the subject to take the MTT again the following day. This would lower variability by improving the quality of the MTT data, resulting in a more precise estimate of the product effect. A single estimate of fasting glucose at  $t=0$ , either via a fingerstick measurement or a blood draw as traditionally performed in clinical trials, would have failed to detect this.

**Figure 3.** Continuous glucose monitoring (CGM) devices provide insight into compliance. (A) CGM data are concordant between when Subject 4 mentioned fasting/consuming the standardized meal for the glucose challenge and what was detected from the CGM device. (B) CGM data can also be used to detect anomalies. There is no concordance between when Subject 6 recorded fasting/consumption of the standardized meal and what was observed from the CGM data. (C) Each subject is asked to obtain data at regular intervals and at least every 8 hours (red line), which is the limit for the sensor memory to store data.



A CGM device could also serve as an easy and efficient device for measuring engagement in the study since subjects needed to scan their devices regularly. In particular, since the devices used in the study could only store 8 hours of data, consecutive scans were not supposed to be more than 8 hours apart. Measuring the time intervals between scans and comparing them to the 8-hour mark provides a measure of the subject's compliance. In [Figure 3C](#), time intervals between all consecutive scans are displayed. As the study progressed, all but one subject tended to let more time go between scans. This is consistent with interviews where subjects reported fatigue as the study progressed. Moreover, the number of scans with more than 8 hours in between also increased. This expected study fatigue affected subjects differently. While Subjects 3, 4, and 5 had small increases in their median times between scans, Subject 2 actually saw a small decrease by the end of the study. Subject 1 went from being the most compliant to the least over the course of the study, whereas Subject 6 displayed a relative lack of compliance throughout the study. Access to these data in real time could guide and target efforts to enhance compliance where needed.

Subjects could also record pictures and annotations through the smartphone app. The number of logs every day varied greatly between subjects, where the average number of logs per day ranged from 2.9 for Subject 4 to 9.73 for Subject 5, and throughout the study, as the variance for the number of logs per day was around 41% of the average. This reflects various behaviors that are captured by the smartphone app and that complement the CGM devices. For example, Subject 4 was one of the most compliant in terms of scanning requirements but logged the fewest number of meals. Study fatigue was also far less apparent than that in scanning requirements, as the average number of annotations per day decreased only slightly with time, suggesting that engagement with the smartphone was

easier to maintain. However, compliance was also impacted by social norms, as reported in interviews. Subjects were less likely to log pictures in social settings and thus annotated after the fact, although recent trends, such as posting pictures of meals on social networks, have lowered the barrier.

### **Integrating CGM Data With the Smartphone App**

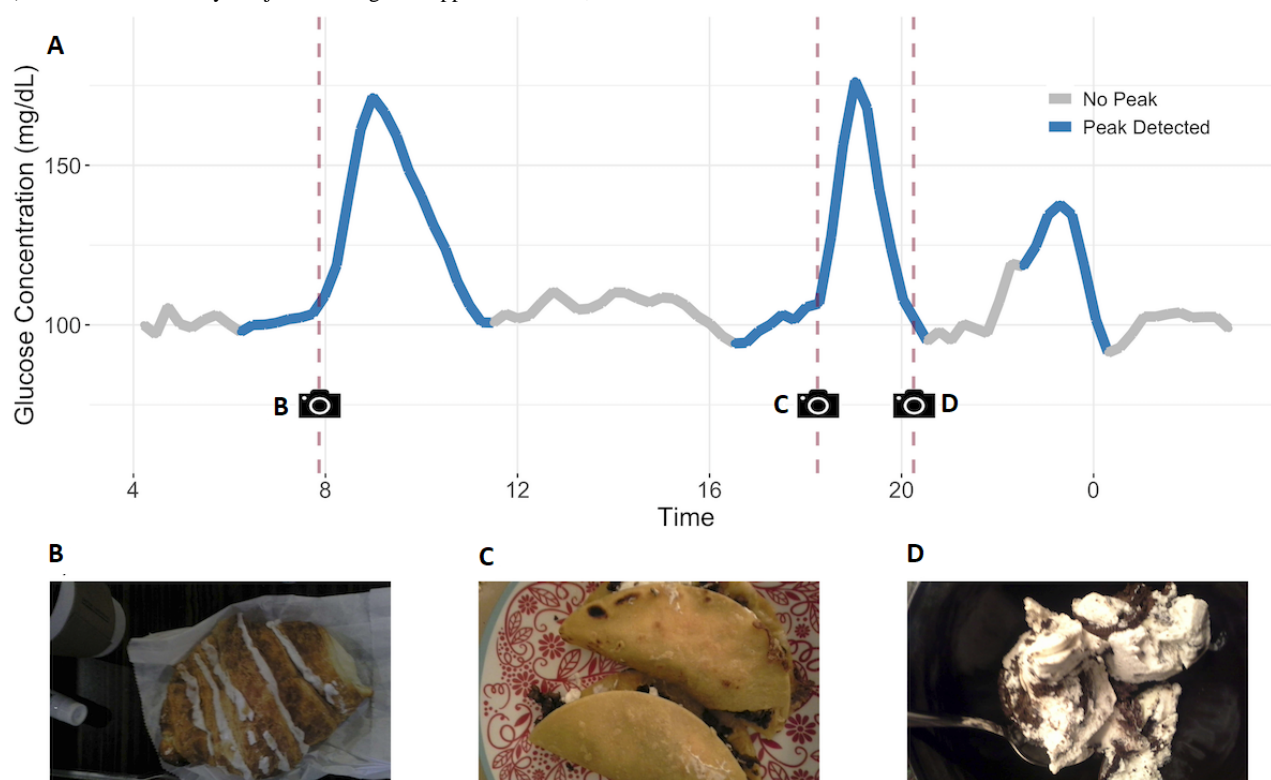
With a measurement every 15 minutes for 6 weeks, the CGM devices produced about 3000 data points per subject throughout the study. An MTT has nine CGM measurements (a measurement every 15 minutes for 2 hours), so all four MTTs represented a total of 36 points per subject throughout the study (1% of the data collected). Here, we show that the CGM devices do capture a trove of information that is not available in current clinical designs without CGM devices.

One feature of interest in continuous monitoring of glucose levels is glucose peaks. Those peaks are induced by a diverse set of behaviors, mostly food consumption and, in some subjects, exercise. Glucose peaks are characterized by their range and duration. Glucose levels of 140 mg/dL or above 2 hours after a meal are indicative of a lack of glucose tolerance [32]. Using our peak detection algorithm, we found that the subjects spent an average of 5 hours and 47 minutes of their day in glucose peaks, representing roughly 25% of all the data collected, whereas MTTs comprised only 1% of the data. We detected between two and three peaks a day, consistent with a routine of three meals a day.

An example of the types of peaks detected by the algorithm can be seen in [Figure 4](#), where the results for March 20, 2018, for one subject are shown. The algorithm detected three peaks during this day, clearly differentiating between noisy fluctuations of glucose levels and glucose peaks induced by a meal. While most peaks are easy to distinguish visually, the amount of data means that automated annotation is necessary.



**Figure 4.** Continuous glucose monitoring (CGM) devices capture more data than the standard meal-tolerance test. (A) Zooming on a specific day allows one to display an entire day of glucose estimates (March 20, 2018, for Subject 1). Peaks are detected with the in-house algorithm (Multimedia Appendix 1) and colored in blue. Annotations logged in the smartphone app by the subject are marked with a dashed red vertical line and a picture logo. (B-D) Pictures submitted by Subject 1 through the app on March 20, 2018.



Integrating the CGM data with the visual diet log provides rich and insightful information. In particular, since the smartphone app was used for both recording glucose levels and taking pictures, we can precisely match the times of one with the other. On March 20, 2018, the subject recorded three meal pictures (Figure 4B-D). The start of the first and second peaks matched very well with the pictures taken. Interestingly however, the third picture (Figure 4D) and the third peak did not match. This picture was recorded over an hour before the start of the next glucose peak. The high fat content visible in the meal (Figure 4D) is consistent with this delay.

The app was only available for Android-based devices, and for this exploratory study, subjects were provided with compatible smartphones. The need to carry a second smartphone was highlighted as a burden in interviews, especially by users of alternative smartphone operating systems. Development of a general app that can be used directly on a subject's smartphone would lessen the burden on subjects in a future study. Subjects also mentioned several improvements to the design that would facilitate their interactions with the app.

### qPCR-Based Secondary Endpoints

At baseline, the beginning/end of each period, and washout, subjects were asked to provide a stool sample. Analysis of stool samples was performed in five of the six subjects; one subject did not provide stool samples. Using fecal qPCR, the concentrations of the strains in the formulation were estimated. In the results shown in Multimedia Appendix 11, strain concentrations were averaged across three replicates. As

expected, at baseline, during placebo, and during placebo washout, the strains in the formulation were not detected. This was true even when the placebo period followed the product period. Most strains were detected at the end of the product period in all subjects (Multimedia Appendix 11). For the subjects with a washout duration of 1 to 3 days (Multimedia Appendix 4), the strains in the formulation could still be detected, although generally at lower levels, after the product washout, suggesting that a washout period of 3 days is too short. Additionally, for the subjects on the active product during period 1 (Subjects 1, 3, and 5), strains were not detected at the end of the placebo period, suggesting that a washout duration between 5 days and 2 weeks is sufficient.

### Code and Data Availability

All the codes and data necessary to reproduce the figures and tables in this paper are available at GitHub [33].

## Discussion

### Principal Findings

This manuscript describes a pilot study exploring the potential of CGM devices with a smartphone app that collects additional data as an avenue for measuring clinically relevant endpoints, assessing compliance in realistic settings, and decreasing the burden of study participation while collecting valuable data that can easily be integrated with glucose levels. Using CGM devices, it is possible to accurately measure important metrics, such as the outcome of a fasted MTT, the AUC of meal-induced

glucose peaks, and the compliance to a fasting regimen. We explored this framework in the context of a 6-week, double-blind, placebo-controlled, 2×2 cross-over pilot study (n=6) comparing a twice daily synbiotic medical food designed to improve glucose control. We demonstrated the promise of CGM devices as a means to assess clinical outcomes of nonpharmacological interventions in rigorous studies for research purposes.

Although accurate automatic detection of glucose peaks is straightforward and can provide valuable data for the clinician and individual, how to use those peaks as clinical endpoints is challenging as the glucose peaks represent a response to real-world behaviors and not to a prequantified study-wide intervention. Commonly, diet logs are used to control for dietary variation, but they have reporting bias and increase subject burden considerably [34]. In this study, we tried to address the issues of subject burden and reporting bias by employing a smartphone app that allowed subjects to take pictures of their meals. This allows the creation of a visual diet log that is in sync with the glucose levels measured with the CGM devices, which provides a rich and valuable source of data using a solution that is simpler to implement and less burdensome to participants. However, further work is required to bridge the gap between image data and actionable carbohydrate content estimates. Variation in the regularity of eating habits or meal content could potentially lead to higher between-subject variance. Even for a within-subject contrast, the lack of regularity in eating and exercise habits increases the variance of the estimate of any treatment effect. Future studies could also leverage those types of visual logs to monitor adherence to a specific diet type (eg, high fiber diet). Complementing the photos with more precise annotations could also improve estimates. Smartphone apps that rely on drop-down menus provide fair estimates of carbohydrate consumption [35,36] and greatly outperform self-assessment [37].

On the other end of the spectrum, the MTT protocol employed in traditional clinical studies represents a very controlled setting. This test yields a much more consistent measure, but it may not reflect the real-world effectiveness of an intervention as accurately. As is expected and has been reported in various studies [38,39], compliance decreases when subjects are increasingly inconvenienced. MTTs, as required in this study, necessitated consuming a specific shake, undergoing a 6-hour fast, and monitoring for 2 to 3 hours following beverage consumption. As this disrupts an individual's daily routine, the number of observations per subject per week needs to be limited. Focusing on breakfast-induced glucose peaks might represent a middle ground. As can be seen in [Multimedia Appendix 12](#), all subjects, except Subject 5, had a high number of peaks at a consistent time most mornings. This denotes a regular breakfast routine at the subject level. This was confirmed in interviews, where subjects reported having either a consistent weekday breakfast or a rotation among a limited set of menus. Defining a consistent breakfast for all subjects a few days a week would provide a robust measure of the level of glucose control in a realistic setting with reduced variability.

We expect that future studies will leverage the novel capabilities of CGM devices to provide real-time compliance data. For

example, a reminder to subjects whenever compliance is detected to be declining, in the form of a push notification or a phone call, could ensure that data capture remains sufficient, with the aim to improve the robustness of the inference. Subjects unanimously said in the final interviews that reasonable notifications would increase compliance, and such methods have been successfully deployed in previous studies [40]. CGM devices could also increase subjects' engagement. In this study, subjects were presented with an interactive dashboard recapitulating their glucose and food behaviors ([Figure 4](#)). Subjects were excited about this and spent time looking at the effects of individual foods on their glucose levels. Presenting an example dashboard to the subjects before baseline, with the promise of more complete results at the end, could increase engagement in the study and therefore compliance. While such usage of CGM devices shows clear promise, care needs to be taken to ensure sound experimental design, including maintaining subject and researcher blinding to the arm assignment. In spite of these issues, proper usage of CGM devices can provide just-in-time actionable measures of compliance.

The CGM devices deployed in this study measured glucose-related metrics, but they can be complemented with other types of data collection depending on the setting. In this exploratory study, stool samples were collected. While collection of this type of data is feasible at home, the samples still need to be delivered to a clinic for analysis. However, the difficulties in collecting this type of data are limited by the fact that they are not needed for all patients or in confirmatory studies. CGM devices can also be used in coordination with other sensors (eg, smartwatches and mobility data from the smartphone) that could be complementary with little added burden on the patient [41,42]. The general principles of compliance measurements discussed above in the context of CGM devices are also applicable to any other metric relying on a connected device. Privacy concerns should also be addressed properly, as most subjects raised this issue during the interviews.

## Limitations

Previous studies [43] have linked the regularity of CGM device scanning to improvements in the "time in range" endpoint (glucose level between 70 mg/dL and 180 mg/dL). While we did not observe it in this study given the general lack of glucose intolerance in the study subjects, differences in engagement between subjects could be linked to differences in outcomes in larger studies. Controlling for adherence, directly measured through scanning and recording annotations, could limit this phenomenon and lead to less noisy estimates of the treatment effect.

Given the scale of the study, a cross-over design was employed as a means to guard against a number of potential confounders. In particular, anecdotal observations while developing the app suggested that individuals responded to the sensor in a distinct and consistent manner. Coupled with the fact that the MTTs were self-administered, a cross-over design seemed logical. Despite these factors, cross-over designs can be of limited utility in the presence of carryover or spillover effects. Indeed, strains were detected at the beginning of the placebo period in some

subjects crossing over from the active product period, indicating the potential for carryover effects. No strains were detected at the end of the placebo period for those same subjects, suggesting that a longer washout period will be required in a future cross-over study.

## Conclusions

We have shown that CGM devices can provide high-quality measurements of relevant endpoints and can enable granular monitoring of subject compliance with low clinical overhead. While this was a small pilot study, we observed a meaningful effect of the study product in subjects with diminished initial glucose control. A broader follow-up study, both in size and duration, is necessary to validate our very preliminary results.

## Acknowledgments

We thank Suzanne Dufault, Nima Hejazi, and Ivana Malenica for insightful discussions on clinical trial designs. We gratefully thank the participants of this study.

## Editorial Notice

This randomized study was only retrospectively registered, explained by authors with “Since it was a prospective trial, we did not register it beforehand.”. The editor granted an exception from ICMJE rules mandating prospective registration of randomized trials because the risk of bias appears low and the study was considered formative. However, readers are advised to carefully assess the validity of any potential explicit or implicit claims related to primary outcomes or effectiveness, as retrospective registration does not prevent authors from changing their outcome measures retrospectively.

## Authors' Contributions

FP, JB, and OK designed the study. MS, FP, and OK conducted the study. HRdB and FP analyzed the data. HRdB wrote the first draft of the manuscript, and FP, JB, OK, and MS suggested edits.

## Conflicts of Interest

All authors are employees and stock/stock option shareholders of Pendulum Therapeutics, Inc (formerly known as “Whole Biome Inc”). OK owns stock in GlySens, Inc, has stock options in ViaCyte, Inc, and is a consultant to NuSirt BioPharma, Adocia, Circius, and NanoPrecision Medical.

## Multimedia Appendix 1

Supplementary methods.

[\[PDF File \(Adobe PDF File\), 397 KB-Multimedia Appendix 1\]](#)

## Multimedia Appendix 2

Screenshot of the app.

[\[PDF File \(Adobe PDF File\), 39 KB-Multimedia Appendix 2\]](#)

## Multimedia Appendix 3

Screenshot of the app.

[\[PDF File \(Adobe PDF File\), 51 KB-Multimedia Appendix 3\]](#)

## Multimedia Appendix 4

Number of days spent in each period. Each subject spent at least 2 weeks in each arm of the study. The washout period between the two arms is at least 3 days.

[\[XLS File \(Microsoft Excel File\), 20 KB-Multimedia Appendix 4\]](#)

## Multimedia Appendix 5

Difference between fingerstick values and continuous glucose monitoring (CGM) estimates. Each panel shows the fingerstick value logged through the mobile app (with a red dot) and the glucose levels as measured with the CGM devices. Values are in accordance with expected values [14].

[\[PNG File , 1050 KB-Multimedia Appendix 5\]](#)

## Multimedia Appendix 6

Interview guide.

[\[PDF File \(Adobe PDF File\), 45 KB-Multimedia Appendix 6\]](#)

---

### Multimedia Appendix 7

According to the recommendations of Schnell et al [30], we report all hypoglycemic events, defined as excursions below 70 mg/dL for at least two consecutive values.

[\[XLS File \(Microsoft Excel File\), 30 KB-Multimedia Appendix 7\]](#)

---

### Multimedia Appendix 8

According to the recommendations of Schnell et al [30], we report four summary statistics at the subject level, measuring time out of range (as number of continuous glucose monitoring scans per day), and glucose variability, reported as the average within-day standard deviation of glucose levels and the standard deviation of the average daily glucose level.

[\[XLS File \(Microsoft Excel File\), 20 KB-Multimedia Appendix 8\]](#)

---

### Multimedia Appendix 9

Interview summary.

[\[PDF File \(Adobe PDF File\), 33 KB-Multimedia Appendix 9\]](#)

---

### Multimedia Appendix 10

Area under the curve (AUC) during the self-administered meal-tolerance tests. Incremental AUCs are computed using the glucose levels provided by the continuous glucose monitoring devices. Subjects recorded the time of the ingestion of the Boost drink using the smartphone app. Incremental AUCs are rounded to the nearest unit.

[\[XLS File \(Microsoft Excel File\), 20 KB-Multimedia Appendix 10\]](#)

---

### Multimedia Appendix 11

Fecal quantitative polymerase chain reaction measures of formulation strain concentration. Each subject, except for Subject 4, provided stool samples. As expected, strains in the formulation were detected when the subjects were taking the formulation and not detected when the subjects were not (ie, at baseline, during placebo, and during placebo washout). Some carryover is observed. Strains are detectable during a few days following the product period.

[\[PNG File , 88 KB-Multimedia Appendix 11\]](#)

---

### Multimedia Appendix 12

Times of the tops of the peaks during the day. Peaks are detected using the algorithm described in Multimedia Appendix 1. For most subjects, a clear trend in the morning suggests a routine linked to breakfast.

[\[PNG File , 27 KB-Multimedia Appendix 12\]](#)

---

### Multimedia Appendix 13

CONSORT-EHEALTH checklist (V 1.6.1).

[\[PDF File \(Adobe PDF File\), 1345 KB-Multimedia Appendix 13\]](#)

---

## References

1. World Health Organization. Global Report on Diabetes. Geneva: World Health Organization; 2016.
2. Centers for Disease Control and Prevention. National Diabetes Statistics Report: Estimates of Diabetes and Its Burden in the United States. Atlanta, GA: Centers for Disease Control and Prevention, US Department of Health and Human Services; 2020.
3. van Dam RM, Rimm EB, Willett WC, Stampfer MJ, Hu FB. Dietary patterns and risk for type 2 diabetes mellitus in U.S. men. *Ann Intern Med* 2002 Feb 05;136(3):201-209. [doi: [10.7326/0003-4819-136-3-200202050-00008](https://doi.org/10.7326/0003-4819-136-3-200202050-00008)] [Medline: [11827496](https://pubmed.ncbi.nlm.nih.gov/11827496/)]
4. Cordain L, Eaton SB, Sebastian A, Mann N, Lindeberg S, Watkins BA, et al. Origins and evolution of the Western diet: health implications for the 21st century. *Am J Clin Nutr* 2005 Feb;81(2):341-354. [doi: [10.1093/ajcn.81.2.341](https://doi.org/10.1093/ajcn.81.2.341)] [Medline: [15699220](https://pubmed.ncbi.nlm.nih.gov/15699220/)]
5. Qi L, Cornelis MC, Zhang C, van Dam RM, Hu FB. Genetic predisposition, Western dietary pattern, and the risk of type 2 diabetes in men. *Am J Clin Nutr* 2009 May;89(5):1453-1458 [FREE Full text] [doi: [10.3945/ajcn.2008.27249](https://doi.org/10.3945/ajcn.2008.27249)] [Medline: [19279076](https://pubmed.ncbi.nlm.nih.gov/19279076/)]

6. Franz MJ, MacLeod J. Success of nutrition-therapy interventions in persons with type 2 diabetes: challenges and future directions. *Diabetes Metab Syndr Obes* 2018;11:265-270 [FREE Full text] [doi: [10.2147/DMSO.S141952](https://doi.org/10.2147/DMSO.S141952)] [Medline: [29928137](https://pubmed.ncbi.nlm.nih.gov/29928137/)]
7. Lean ME, Leslie WS, Barnes AC, Brosnahan N, Thom G, McCombie L, et al. Primary care-led weight management for remission of type 2 diabetes (DiRECT): an open-label, cluster-randomised trial. *The Lancet* 2018 Feb 10;391(10120):541-551. [doi: [10.1016/S0140-6736\(17\)33102-1](https://doi.org/10.1016/S0140-6736(17)33102-1)] [Medline: [29221645](https://pubmed.ncbi.nlm.nih.gov/29221645/)]
8. Crichton GE, Howe PR, Buckley JD, Coates AM, Murphy KJ, Bryan J. Long-term dietary intervention trials: critical issues and challenges. *Trials* 2012 Jul 20;13(1):111 [FREE Full text] [doi: [10.1186/1745-6215-13-111](https://doi.org/10.1186/1745-6215-13-111)] [Medline: [22812577](https://pubmed.ncbi.nlm.nih.gov/22812577/)]
9. Lewis JD, Albenberg L, Lee D, Kratz M, Gottlieb K, Reinisch W. The Importance and Challenges of Dietary Intervention Trials for Inflammatory Bowel Disease. *Inflamm Bowel Dis* 2017 Feb;23(2):181-191 [FREE Full text] [doi: [10.1097/MIB.0000000000001009](https://doi.org/10.1097/MIB.0000000000001009)] [Medline: [28079619](https://pubmed.ncbi.nlm.nih.gov/28079619/)]
10. Coran P, Goldsack JC, Grandinetti CA, Bakker JP, Bolognese M, Dorsey ER, et al. Advancing the Use of Mobile Technologies in Clinical Trials: Recommendations from the Clinical Trials Transformation Initiative. *Digit Biomark* 2019;3(3):145-154 [FREE Full text] [doi: [10.1159/000503957](https://doi.org/10.1159/000503957)] [Medline: [32095773](https://pubmed.ncbi.nlm.nih.gov/32095773/)]
11. Waltz E. Sweet sensation. *Nat Biotechnol* 2019 Apr;37(4):340-344. [doi: [10.1038/s41587-019-0086-2](https://doi.org/10.1038/s41587-019-0086-2)] [Medline: [30940935](https://pubmed.ncbi.nlm.nih.gov/30940935/)]
12. Hirsch IB. History of Glucose Monitoring. In: *Role of Continuous Glucose Monitoring in Diabetes Treatment*. Arlington, VA: American Diabetes Association; 2018.
13. Freestyle Libre 14 Day Flash Glucose Monitoring System. US Food & Drugs Administration. 2017. URL: <https://www.fda.gov/medical-devices/recently-approved-devices/freestyle-libre-14-day-flash-glucose-monitoring-system-p160030s017> [accessed 2020-03-12]
14. Declarations of Conformity. Abbott. URL: <https://www.diabetescare.abbott/declarations-of-conformity.html> [accessed 2020-03-25]
15. Murata T, Sakane N, Kato K, Tone A, Toyoda M. The Current Intermittent-Scanning CGM Device Situation in Japan: Only Adjunctive Use to SMBG Is Approved and the Latest Health Insurance Coverage Details. *J Diabetes Sci Technol* 2018 May;12(3):729-730 [FREE Full text] [doi: [10.1177/1932296817749860](https://doi.org/10.1177/1932296817749860)] [Medline: [29281891](https://pubmed.ncbi.nlm.nih.gov/29281891/)]
16. Bergenstal RM, Rosenstock J, Bastyr EJ, Prince MJ, Qu Y, Jacober SJ. Lower glucose variability and hypoglycemia measured by continuous glucose monitoring with novel long-acting insulin LY2605541 versus insulin glargine. *Diabetes Care* 2014;37(3):659-665. [doi: [10.2337/dc12-2621](https://doi.org/10.2337/dc12-2621)] [Medline: [24198302](https://pubmed.ncbi.nlm.nih.gov/24198302/)]
17. Koyanagawa N, Miyoshi H, Ono K, Nakamura A, Cho KY, Yamamoto K, et al. Comparative effects of vildagliptin and sitagliptin determined by continuous glucose monitoring in patients with type 2 diabetes mellitus. *Endocr J* 2016 Aug 31;63(8):747-753 [FREE Full text] [doi: [10.1507/endocrj.EJ16-0266](https://doi.org/10.1507/endocrj.EJ16-0266)] [Medline: [27321385](https://pubmed.ncbi.nlm.nih.gov/27321385/)]
18. Jiménez-Domínguez G, Ble-Castillo JL, Aparicio-Trápala MA, Juárez-Rojop IE, Tovilla-Zárate CA, Ble-Castillo DJ, et al. Effects of Acute Ingestion of Native Banana Starch on Glycemic Response Evaluated by Continuous Glucose Monitoring in Obese and Lean Subjects. *Int J Environ Res Public Health* 2015 Jul 06;12(7):7491-7505 [FREE Full text] [doi: [10.3390/ijerph120707491](https://doi.org/10.3390/ijerph120707491)] [Medline: [26154657](https://pubmed.ncbi.nlm.nih.gov/26154657/)]
19. Nishimura R, Osonoi T, Kanada S, Jinnouchi H, Sugio K, Omiya H, et al. Effects of luseogliflozin, a sodium-glucose co-transporter 2 inhibitor, on 24-h glucose variability assessed by continuous glucose monitoring in Japanese patients with type 2 diabetes mellitus: a randomized, double-blind, placebo-controlled, crossover study. *Diabetes Obes Metab* 2015 Aug;17(8):800-804 [FREE Full text] [doi: [10.1111/dom.12481](https://doi.org/10.1111/dom.12481)] [Medline: [25930989](https://pubmed.ncbi.nlm.nih.gov/25930989/)]
20. Jinnouchi H, Koyama M, Amano A, Takahashi Y, Yoshida A, Hieshima K, et al. Continuous Glucose Monitoring During Basal-Bolus Therapy Using Insulin Glargine 300 U mL(-1) and Glargine 100 U mL (-1) in Japanese People with Type 1 Diabetes Mellitus: A Crossover Pilot Study. *Diabetes Ther* 2015 Jun;6(2):143-152 [FREE Full text] [doi: [10.1007/s13300-015-0115-1](https://doi.org/10.1007/s13300-015-0115-1)] [Medline: [26055218](https://pubmed.ncbi.nlm.nih.gov/26055218/)]
21. Holst JJ, Buse JB, Rodbard HW, Linjawi S, Woo VC, Boesgaard TW, et al. IDegLira Improves Both Fasting and Postprandial Glucose Control as Demonstrated Using Continuous Glucose Monitoring and a Standardized Meal Test. *J Diabetes Sci Technol* 2015 Oct 06;10(2):389-397 [FREE Full text] [doi: [10.1177/1932296815610124](https://doi.org/10.1177/1932296815610124)] [Medline: [26443290](https://pubmed.ncbi.nlm.nih.gov/26443290/)]
22. Danne T, Philotheou A, Goldman D, Guo X, Ping L, Cali A, et al. A randomized trial comparing the rate of hypoglycemia--assessed using continuous glucose monitoring--in 125 preschool children with type 1 diabetes treated with insulin glargine or NPH insulin (the PRESCHOOL study). *Pediatr Diabetes* 2013 Dec;14(8):593-601 [FREE Full text] [doi: [10.1111/pedi.12051](https://doi.org/10.1111/pedi.12051)] [Medline: [23730996](https://pubmed.ncbi.nlm.nih.gov/23730996/)]
23. Study Demonstrates Remote CGM Initiation Successful at Improving Diabetes Outcomes and Quality of Life. PRWeb. URL: [https://www.prweb.com/releases/study\\_demonstrates\\_remote\\_cgm\\_initiation\\_successful\\_at\\_improving\\_diabetes\\_outcomes\\_and\\_quality\\_of\\_life/prweb16940784.htm](https://www.prweb.com/releases/study_demonstrates_remote_cgm_initiation_successful_at_improving_diabetes_outcomes_and_quality_of_life/prweb16940784.htm) [accessed 2020-02-17]
24. Aberer F, Lichtenegger KM, Smajic E, Donsa K, Malle O, Samonigg J, et al. GlucoTab-guided insulin therapy using insulin glargine U300 enables glycaemic control with low risk of hypoglycaemia in hospitalized patients with type 2 diabetes. *Diabetes Obes Metab* 2019 Mar;21(3):584-591 [FREE Full text] [doi: [10.1111/dom.13559](https://doi.org/10.1111/dom.13559)] [Medline: [30328252](https://pubmed.ncbi.nlm.nih.gov/30328252/)]
25. Reddy R, El Youssef J, Winters-Stone K, Branigan D, Leitschuh J, Castle J, et al. The effect of exercise on sleep in adults with type 1 diabetes. *Diabetes Obes Metab* 2018 Feb;20(2):443-447 [FREE Full text] [doi: [10.1111/dom.13065](https://doi.org/10.1111/dom.13065)] [Medline: [28718987](https://pubmed.ncbi.nlm.nih.gov/28718987/)]

26. Perraudeau F, McMurdie P, Bullard J, Cheng A, Cutcliffe C, Deo A, et al. Improvements to postprandial glucose control in subjects with type 2 diabetes: a multicenter, double blind, randomized placebo-controlled trial of a novel probiotic formulation. *BMJ Open Diabetes Res Care* 2020 Jul;8(1) [FREE Full text] [doi: [10.1136/bmjdr-2020-001319](https://doi.org/10.1136/bmjdr-2020-001319)] [Medline: [32675291](https://pubmed.ncbi.nlm.nih.gov/32675291/)]
27. Girish P. Simple Algorithms for Peak Detection in Time-Series. ResearchGate. 2009. URL: [https://www.researchgate.net/publication/228853276\\_Simple\\_Algorithms\\_for\\_Peak\\_Detection\\_in\\_Time-Series](https://www.researchgate.net/publication/228853276_Simple_Algorithms_for_Peak_Detection_in_Time-Series) [accessed 2019-05-12]
28. BOOST® Original. Nestlé Health Science. URL: <https://www.nestlehealthscience.com/brands/boost/boost-original> [accessed 2019-11-20]
29. Potteiger J, Jacobsen D, Donnelly J. A comparison of methods for analyzing glucose and insulin areas under the curve following nine months of exercise in overweight adults. *Int J Obes Relat Metab Disord* 2002 Jan 15;26(1):87-89. [doi: [10.1038/sj.ijo.0801839](https://doi.org/10.1038/sj.ijo.0801839)] [Medline: [11791151](https://pubmed.ncbi.nlm.nih.gov/11791151/)]
30. Schnell O, Barnard K, Bergenstal R, Bosi E, Garg S, Guerci B, et al. Role of Continuous Glucose Monitoring in Clinical Trials: Recommendations on Reporting. *Diabetes Technol Ther* 2017 Jul;19(7):391-399 [FREE Full text] [doi: [10.1089/dia.2017.0054](https://doi.org/10.1089/dia.2017.0054)] [Medline: [28530490](https://pubmed.ncbi.nlm.nih.gov/28530490/)]
31. Schmidt MI, Hadji-Georgopoulos A, Rendell M, Margolis S, Kowarski A. The dawn phenomenon, an early morning glucose rise: implications for diabetic intraday blood glucose variation. *Diabetes Care* 1981;4(6):579-585. [doi: [10.2337/diacare.4.6.579](https://doi.org/10.2337/diacare.4.6.579)] [Medline: [6751733](https://pubmed.ncbi.nlm.nih.gov/6751733/)]
32. Two-Hour Postprandial Glucose. University of Rochester Medical Center. URL: [https://www.urmc.rochester.edu/encyclopedia/content.aspx?contenttypeid=167&contentid=glucose\\_two\\_hour\\_postprandial](https://www.urmc.rochester.edu/encyclopedia/content.aspx?contenttypeid=167&contentid=glucose_two_hour_postprandial) [accessed 2021-02-20]
33. GitHub. URL: <https://github.com/wholebiome/WB01-205> [accessed 2021-02-15]
34. Thompson F, Subar A. Dietary Assessment Methodology. In: *Nutrition in the Prevention and Treatment of Disease*. Bethesda, MD: Elsevier; 2001:3-30.
35. Fallaize R, Zenun Franco R, Pasang J, Hwang F, Lovegrove JA. Popular Nutrition-Related Mobile Apps: An Agreement Assessment Against a UK Reference Method. *JMIR Mhealth Uhealth* 2019 Feb 20;7(2):e9838 [FREE Full text] [doi: [10.2196/mhealth.9838](https://doi.org/10.2196/mhealth.9838)] [Medline: [30785409](https://pubmed.ncbi.nlm.nih.gov/30785409/)]
36. Ferrara G, Kim J, Lin S, Hua J, Seto E. A Focused Review of Smartphone Diet-Tracking Apps: Usability, Functionality, Coherence With Behavior Change Theory, and Comparative Validity of Nutrient Intake and Energy Estimates. *JMIR Mhealth Uhealth* 2019 May 17;7(5):e9232 [FREE Full text] [doi: [10.2196/mhealth.9232](https://doi.org/10.2196/mhealth.9232)] [Medline: [31102369](https://pubmed.ncbi.nlm.nih.gov/31102369/)]
37. Rhyner D, Loher H, Dehais J, Anthimopoulos M, Shevchik S, Botwey RH, et al. Carbohydrate Estimation by a Mobile Phone-Based System Versus Self-Estimations of Individuals With Type 1 Diabetes Mellitus: A Comparative Study. *J Med Internet Res* 2016 May 11;18(5):e101 [FREE Full text] [doi: [10.2196/jmir.5567](https://doi.org/10.2196/jmir.5567)] [Medline: [27170498](https://pubmed.ncbi.nlm.nih.gov/27170498/)]
38. Spilker B. Methods of Assessing and Improving Patient Compliance in Clinical Trials. *IRB: Ethics and Human Research* 1992 May;14(3):1. [doi: [10.2307/3563718](https://doi.org/10.2307/3563718)]
39. Claxton AJ, Cramer J, Pierce C. A systematic review of the associations between dose regimens and medication compliance. *Clin Ther* 2001 Aug;23(8):1296-1310. [doi: [10.1016/s0149-2918\(01\)80109-0](https://doi.org/10.1016/s0149-2918(01)80109-0)] [Medline: [11558866](https://pubmed.ncbi.nlm.nih.gov/11558866/)]
40. Haas K, Hayoz S, Maurer-Wiesner S. Effectiveness and Feasibility of a Remote Lifestyle Intervention by Dietitians for Overweight and Obese Adults: Pilot Study. *JMIR Mhealth Uhealth* 2019 Apr 11;7(4):e12289 [FREE Full text] [doi: [10.2196/12289](https://doi.org/10.2196/12289)] [Medline: [30973338](https://pubmed.ncbi.nlm.nih.gov/30973338/)]
41. Anguera JA, Jordan JT, Castaneda D, Gazzaley A, Areán PA. Conducting a fully mobile and randomised clinical trial for depression: access, engagement and expense. *BMJ Innov* 2016 Jan;2(1):14-21 [FREE Full text] [doi: [10.1136/bmjinnov-2015-000098](https://doi.org/10.1136/bmjinnov-2015-000098)] [Medline: [27019745](https://pubmed.ncbi.nlm.nih.gov/27019745/)]
42. Wahle F, Kowatsch T, Fleisch E, Rufer M, Weidt S. Mobile Sensing and Support for People With Depression: A Pilot Trial in the Wild. *JMIR Mhealth Uhealth* 2016 Sep 21;4(3):e111 [FREE Full text] [doi: [10.2196/mhealth.5960](https://doi.org/10.2196/mhealth.5960)] [Medline: [27655245](https://pubmed.ncbi.nlm.nih.gov/27655245/)]
43. Dunn TC, Xu Y, Hayter G, Ajjan RA. Real-world flash glucose monitoring patterns and associations between self-monitoring frequency and glycaemic measures: A European analysis of over 60 million glucose tests. *Diabetes Res Clin Pract* 2018 Mar;137:37-46 [FREE Full text] [doi: [10.1016/j.diabres.2017.12.015](https://doi.org/10.1016/j.diabres.2017.12.015)] [Medline: [29278709](https://pubmed.ncbi.nlm.nih.gov/29278709/)]

## Abbreviations

- AUC:** area under the curve
- CGM:** continuous glucose monitoring
- MTT:** meal-tolerance test
- qPCR:** quantitative polymerase chain reaction
- RCT:** randomized controlled trial
- T2D:** type 2 diabetes

*Edited by G Eysenbach; submitted 12.05.20; peer-reviewed by C Reis, S Pit, A Teles; comments to author 17.09.20; revised version received 22.10.20; accepted 24.01.21; published 04.03.21*

*Please cite as:*

*Roux de Bézieux H, Bullard J, Kolterman O, Souza M, Perraudeau F*

*Medical Food Assessment Using a Smartphone App With Continuous Glucose Monitoring Sensors: Proof-of-Concept Study*

*JMIR Form Res 2021;5(3):e20175*

*URL: <https://formative.jmir.org/2021/3/e20175>*

*doi: [10.2196/20175](https://doi.org/10.2196/20175)*

*PMID: [33661120](https://pubmed.ncbi.nlm.nih.gov/33661120/)*

©Hector Roux de Bézieux, James Bullard, Orville Kolterman, Michael Souza, Fanny Perraudeau. Originally published in JMIR Formative Research (<http://formative.jmir.org>), 04.03.2021. This is an open-access article distributed under the terms of the Creative Commons Attribution License (<https://creativecommons.org/licenses/by/4.0/>), which permits unrestricted use, distribution, and reproduction in any medium, provided the original work, first published in JMIR Formative Research, is properly cited. The complete bibliographic information, a link to the original publication on <http://formative.jmir.org>, as well as this copyright and license information must be included.